

# PRICELIST

PANELS FOR SECTIONAL DOORS

TRACKS FOR SECTIONAL DOORS

valid from 15 May 2024 (updated: 8 August 2024)



**CELGAR**®



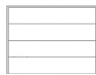

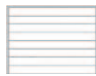

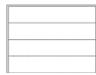

ROBUST CONSTRUCTION

1. CELGAR Sp. z o.o., hereinafter referred to as the Manufacturer, guarantees that the panels, parts for sectional doors, and steel profiles listed in this warranty card, hereinafter referred to as the products, are of good quality, durable, and function properly, provided that:
  - a) the products have not been damaged during transport by the Seller, during loading and transport by the Buyer, or by any third party in the case of collection at the Seller's premises,
  - b) the products have not been damaged from the moment of delivery to the Buyer,
  - c) installation of the products has been carried out in accordance with the proper installation instructions for the given product,
  - d) the products have been used in accordance with the recommendations specified in the user manual,
  - e) no repairs or modifications have been carried out on the products by entities not authorized by the Manufacturer.
2. Warranty liability applies exclusively to defects arising from causes inherent in the product, stored in covered, dry, and ventilated spaces, installed under normal environmental conditions, away from materials and works that could negatively affect the products.
3. The warranty covers defects in the product caused by the Manufacturer, including the use of defective materials, manufacturing errors, and design flaws.
4. Warranty rights can be exercised by the Buyer upon presentation of proof of purchase of the product. The warranty is valid only in the territory of the Republic of Poland and applies to products purchased and installed in Poland. A warranty card not fully completed is invalid. Exercising warranty rights requires a claim submitted in accordance with the Manufacturer's General Terms of Sale.
5. The warranty period is 2 years, except that the warranty for wet-painted coatings is 18 months.
6. The warranty period begins on the date of delivery of the product to the first Buyer who purchased a factory-new product or after 7 months from the production date.
7. In the event of detected defects, the Buyer is obliged to inform the Manufacturer within 7 days of their discovery in the manner and with the information specified by the Manufacturer in the General Terms of Sale. Visible defects must be reported before the product is installed. Failure to meet this condition will result in the loss of warranty rights.
8. Use of a defective product is prohibited, as it may pose a safety hazard to the User and unjustifiably increase repair costs. The Manufacturer is not liable for damages resulting from the use of defective or damaged products.
9. If the Manufacturer is responsible for the identified defects, it may, at its discretion:
  - a) repair the product at the Buyer's premises,
  - b) repair or replace damaged or defective components at the Manufacturer's premises (after receiving the components),
  - c) commission repairs to the Seller or another authorized company at the Manufacturer's expense,
  - d) replace the product at the Seller's or Buyer's premises,
  - e) refund the purchase price of the product after its return.
  - f) for Buyers who are not consumers, components are shipped with a 30-day service invoice; damaged items must be returned for verification. Replacement and servicing are the Buyer's responsibility.
10. Acceptance of the warranty and its method of handling are decided exclusively by the Manufacturer. In the event of a decision to replace the product, the Manufacturer may provide a similar product of the same type, kind, and quality.
11. The Manufacturer's liability for product defects shall not exceed the purchase value of the product. The Manufacturer is not liable for damages resulting from a defect, such as other losses or loss of profit.
12. Any damage caused by improper storage, inadequate maintenance, installation, or use not in accordance with the instructions, as well as other causes not attributable to the Manufacturer, may only be remedied at the Buyer's expense.
13. Identification of possible external visual defects of the product should be made from a distance equal to two diagonals of the product, but not less than 5 meters.
14. For wet-painted coatings, variations in color and gloss are allowed. These changes depend on sun exposure. Stains and discoloration may occur.
15. The warranty does not cover:
  - a) Any color changes, fading, or corrosion of the product or its components caused by external factors such as sun, condensation, acid rain, salt, and other phenomena accelerating corrosion, including excessive air humidity in the room where the product is installed (over 60–65%).
  - b) Galvanized surfaces with damage of less than 0.5% of the total area due to product use.
  - c) For laminated surfaces, color differences less than 15%.
  - d) Color differences between products from different production batches or produced with different technologies.
  - e) Painted surfaces with damage of less than 0.5% of the total area due to product use.
  - f) Changes in paint coating resulting from different aging of coatings applied on different materials.
  - g) Damage, scratches, dents, etc., in areas not affecting the aesthetics or functionality of the product.
  - h) Damage resulting from exposure of the product to temperatures above 75°C, e.g., installing a dark door in a sunny location or drying room.
  - i) Effects of aggressive chemicals, such as water, alkalis, salts, acids, solvents, petroleum-based materials, lime, cement, cleaning and abrasive agents causing permanent material damage, as well as animal substances, fire, abnormal weather events, natural disasters, and random events.
  - j) Damage caused by the use of corrosive detergents, high-pressure streams, excessive water temperature from pressure washers, or sudden thermal contrasts, e.g., pouring cold water on sun-heated panels.
  - k) Repairs carried out by persons without the appropriate technical knowledge.
  - l) Material changes, i.e., changes occurring in the product or its elements resulting from normal use, irregularities, or limitations in functioning, such as blockages caused by ice, snow, branches. All other damages, defects, and malfunctions not constituting product defects under this warranty.
  - m) Wear of the paint coating under seals and at panel joints (cladding) resulting from natural use, design, operation of the product, and contamination.
  - n) [...]
  - o) Occurrence of so-called „white corrosion“ on galvanized elements, consisting mainly of zinc oxide/hydroxide, resulting from storage or use in conditions of prolonged moisture, does not constitute grounds for a claim.
  - p) Elastic deformation of sectional door panels and roller door profiles caused by the bimetal effect due to temperature differences between the external and internal sides.
- q) Damage resulting from leaving protective films on the product for longer than 10 days from installation, or longer than 3 months from the purchase date if stored indoors without sun exposure.
- r) Damage resulting from contact with aggressive substances or use in environments of very high corrosivity (C5 category according to PN-EN 12500), or installation closer than 500 m to the seashore.
- s) Products installed in rooms with livestock (barns, pigsties, poultry houses, etc.).
- t) Factory-unprotected cut edges and cuts made during installation (wire ends, cables, hole edges, etc.) up to 10 mm from the cut line.
- u) Malfunction or defects caused by installation not in accordance with the proper installation instructions or standard construction practices.
- v) [...]
- w) [...]
- x) Damage resulting from installation of spare parts from other manufacturers.
- y) Effects of installing products in high-humidity environments.
16. [...]
17. [...]
18. Unauthorized or self-made structural changes or modifications are not permitted and will result in the loss of warranty rights.
19. In the case of unjustified service calls for warranty repairs, the full costs will be borne by the Claimant.
20. All installation, operation, and usage instructions can be obtained from the Manufacturer and are also available on the website [www.celgar.eu](http://www.celgar.eu)
21. To comply with warranty conditions, anti-corrosion protection of visible steel parts must be performed within 6 months of purchase. Additionally, a technical inspection of the product is required every 6 months from the purchase date, which should be documented.
22. The Manufacturer is not responsible for product damage or losses incurred by the Client due to events beyond the Manufacturer's control, such as force majeure.
23. If defect repair requires additional equipment necessary for safe access, e.g., scaffolding, the claimant must provide the required equipment.
24. This warranty does not exclude, limit, or suspend the Buyer's rights arising from non-conformity of the goods with the contract.
25. The Manufacturer undertakes to execute warranty rights within 30 days from the date of claim submission. However, in case of objective difficulties in performing warranty rights, this period may be extended by the Manufacturer up to 60 days. The entitled party will be informed of the reasons for the extension.

## Information

Orders, product sales and the complaint process are carried out in accordance with the general terms and conditions of sale and the warranty conditions available on the website [www.celgar.eu](http://www.celgar.eu)

## Panel embossings, surface textures and colours

Type of embossing	Type of external texture	Colours	Panel heights [mm]*						
			425	496	500	527	558	610	621
 Longitudinal panel	 woodgrain	Anthracite grey <b>RAL 7016</b> , Brown <b>RAL 8017</b> , Silver <b>RAL 9006</b>			•			•	
 Without embossing	 woodgrain	Anthracite grey <b>RAL 7016</b> , Brown <b>RAL 8014</b> , Brown <b>RAL 8017</b> , Silver <b>RAL 9006</b> , White <b>RAL 9016</b>		•	•	•	•	•	•
 Single line	 smooth	<b>Walnut</b>		•	•			•	
		<b>Bog Oak, Winchester, Anthracite matte</b>			•			•	
		Anthracite grey <b>RAL 7016</b> , <b>Golden Oak</b>		•	•	•	•	•	•
 Without embossing	 smooth	Anthracite grey <b>RAL 7016</b> , <b>Walnut</b> , <b>Winchester, Golden Oak</b>			•	•	•	•	
		<b>Bog Oak</b>	•		•	•	•	•	
		Black matte <b>RAL 9005</b> , <b>Anthracite matte</b>			•			•	

\* Heights marked in grey are available for a minimum order of **468 lm**.

## PREMIUM prices

Panel heights: 500 mm, 610 mm	
Requirements: <ul style="list-style-type: none"> <li>prices ex works (Wojnicz),</li> <li>minimum order quantity: <b>216 lm</b> of a given panel type,</li> <li>standard length: <b>13 lm</b>,</li> <li>panel lengths from <b>12 lm</b> to <b>13.5 lm</b>,</li> <li>one surface texture,</li> <li>one panel height,</li> <li>one colour,</li> <li>one embossing type,</li> <li>packed in equal bundles of 18 pieces.</li> </ul>	
Panel colours	net price (m <sup>2</sup> )
Anthracite grey <b>RAL 7016</b> , Brown <b>RAL 8014</b> , Brown <b>RAL 8017</b> , Silver <b>RAL 9006</b> , White <b>RAL 9016</b>	<b>100,00 PLN</b> <b>24,50 EUR</b>
Black matte <b>RAL 9005</b> , <b>Anthracite matte</b>	<b>114,00 PLN</b> <b>28,00 EUR</b>
Wood-effect painted panels: <b>Golden Oak</b> , <b>Walnut</b> , <b>Winchester</b>	<b>124,00 PLN</b> <b>30,50 EUR</b>

## Group A prices

Panel heights: 500 mm, 610 mm	
Requirements: <ul style="list-style-type: none"> <li>prices ex works (Wojnicz),</li> <li>minimum order quantity: <b>108 lm</b> of a given panel type,</li> <li>cut to the required length from <b>3 lm</b> to <b>13.5 lm</b>,</li> <li>one colour,</li> <li>one embossing type,</li> <li>packed in equal bundles of 18 pieces.</li> </ul>	
Panel colours	net price (m <sup>2</sup> )
Anthracite grey <b>RAL 7016</b> , Brown <b>RAL 8014</b> , Brown <b>RAL 8017</b> , Silver <b>RAL 9006</b> , White <b>RAL 9016</b>	<b>117,00 PLN</b>
	<b>28,50 EUR</b>
Black matte <b>RAL 9005</b> , Anthracite matte	<b>127,00 PLN</b>
	<b>31,00 EUR</b>
Wood-effect painted panels: <b>Golden Oak</b> , <b>Walnut</b> , <b>Winchester</b>	<b>139,00 PLN</b>
	<b>34,00 EUR</b>
Wood-effect foil-coated panels: <b>Bog Oak</b>	<b>165,00 PLN</b>
	<b>40,50 EUR</b>

Panel heights: 425 mm, 496 mm, 527 mm, 558 mm, 621 mm	
Requirements <ul style="list-style-type: none"> <li>prices ex works (Wojnicz),</li> <li>minimum order quantity: <b>468 lm</b>,</li> <li>one panel height,</li> <li>panel lengths from <b>6 lm</b> to <b>13.5 lm</b>,</li> <li>minimum of <b>234 lm</b> in one colour, texture and embossing type,</li> <li>packed in equal bundles of 18 pieces.</li> </ul>	
Panel colours	net price (m <sup>2</sup> )
Anthracite grey <b>RAL 7016</b> , Brown <b>RAL 8014</b> , Brown <b>RAL 8017</b> , Silver <b>RAL 9006</b> , White <b>RAL 9016</b>	<b>128,00 PLN</b>
	<b>31,50 EUR</b>
Black matte <b>RAL 9005</b> , Anthracite matte	<b>139,00 PLN</b>
	<b>34,00 EUR</b>
Wood-effect painted panels: <b>Golden Oak</b> , <b>Walnut</b> , <b>Winchester</b>	<b>151,00 PLN</b>
	<b>37,00 EUR</b>
Wood-effect foil-coated panels: <b>Bog Oak</b>	<b>173,00 PLN</b>
	<b>42,50 EUR</b>

## Group B prices

Panel heights: 425 mm, 496 mm, 500 mm, 527 mm, 558 mm, 610 mm, 621 mm *	
Requirements: <ul style="list-style-type: none"> <li>prices ex works (Wojnicz) applicable for a minimum purchase of <b>30 m<sup>2</sup></b> of panels</li> </ul>	
Panel colours	net price (m <sup>2</sup> )
Anthracite grey <b>RAL 7016</b> , Brown <b>RAL 8014</b> , Brown <b>RAL 8017</b> , Silver <b>RAL 9006</b> , White <b>RAL 9016</b>	<b>160,00 PLN</b>
	<b>39,00 EUR</b>
Black matte <b>RAL 9005</b> , Anthracite matte	<b>170,00 PLN</b>
	<b>41,50 EUR</b>
Wood-effect painted panels: <b>Golden Oak</b> , <b>Walnut</b> , <b>Winchester</b>	<b>180,00 PLN</b>
	<b>44,00 EUR</b>
Wood-effect foil-coated panels: <b>Bog Oak</b>	<b>190,00 PLN</b>
	<b>46,50 EUR</b>

\* panel heights 425 mm, 496 mm, 527 mm, 558 mm, 621 mm, if available in stock

Additional charges	Surcharge
Cutting panels to the required length (the invoice reflects the total quantity of panels ordered after cutting)	<b>+ 12%</b> (for Group B prices)
Longitudinal cutting (cutting twice on a single panel; the invoice reflects the total quantity of panels ordered before cutting)	<b>included</b> (for Group B) <b>+6%</b> (for PREMIUM)
Surcharge for purchases below 30 m <sup>2</sup> of panels – does not apply to dealers or wholesale customers of the GARGULA Group	<b>+ 37%</b>
Other colours	individual calculation

## PREMIUM prices

Tracks for sectional doors		
Requirements:		
<ul style="list-style-type: none"> <li>prices ex works (Wojnicz),</li> <li>minimum order quantity: <b>200 lm</b> of a given type</li> </ul>		
Components of the track set	thickness <b>1.5 mm</b> net price (lm)	thickness <b>2.0 mm</b> net price (lm)
vertical angle	<b>16,00 PLN</b> 4,00 EUR	<b>20,00 PLN</b> 5,00 EUR
vertical track	<b>10,00 PLN</b> 2,50 EUR	<b>14,00 PLN</b> 3,50 EUR
half-curve track	<b>12,00 PLN</b> 3,00 EUR	<b>16,00 PLN</b> 4,00 EUR
full-curve track	<b>12,00 PLN</b> 3,00 EUR	<b>16,00 PLN</b> 4,00 EUR
panel reinforcement (thickness <b>0,8 mm</b> )	<b>14,00 PLN</b> 3,50 EUR	

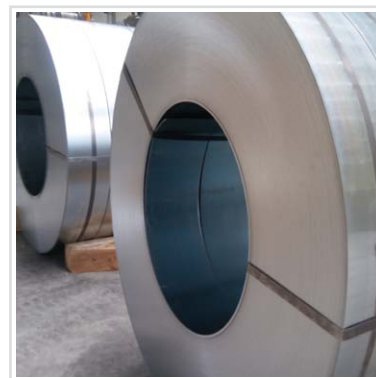
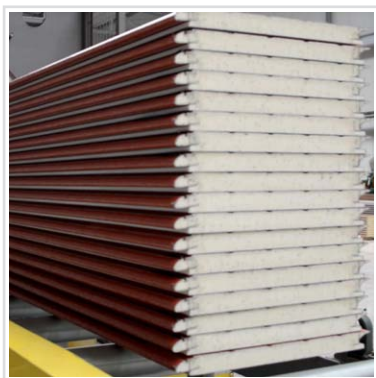
## Group A prices

Tracks for sectional doors		
Requirements:		
<ul style="list-style-type: none"> <li>prices ex works (Wojnicz),</li> <li>minimum order quantity: <b>30 lm</b> of a given type</li> </ul>		
Components of the track set	thickness <b>1.5 mm</b> net price (lm)	thickness <b>2.0 mm</b> net price (lm)
vertical angle	<b>21,00 PLN</b> 5,50 EUR	<b>27,00 PLN</b> 7,00 EUR
vertical track	<b>13,00 PLN</b> 3,20 EUR	<b>17,00 PLN</b> 4,20 EUR
half-curve track	<b>14,00 PLN</b> 3,50 EUR	<b>18,00 PLN</b> 4,50 EUR
full-curve track	<b>14,00 PLN</b> 3,50 EUR	<b>18,00 PLN</b> 4,50 EUR
panel reinforcement (thickness <b>0.8 mm</b> )	<b>15,00 PLN</b> 3,70 EUR	

## Prices for track sets

Tracks for sectional doors – sets					
Requirements:					
<ul style="list-style-type: none"> <li>prices ex works (Wojnicz),</li> <li>minimum order quantity: <b>20 sets</b> of a given type; otherwise a 30% surcharge applies (does not apply to dealers or wholesale customers of the Gargula Group)</li> </ul>					
<b>Basic set:</b> 2 x vertical angle, 2 x vertical track , 2 x full-curve track, 2 x half-curve track		<b>Rear track set:</b> 2 x vertical angle, 2 x vertical track, 2 x full-curve track, 2 x half-curve track		<b>Single track set:</b> 2 x vertical angle, 2 x vertical track, 2 x full-curve track, 2 x additional track for curve reinforcement	
Set for height (mm)	thickness <b>1.5 mm</b> net price (set)	thickness <b>2.0 mm</b> net price (set)	Set for height (mm)	thickness <b>1.5 mm</b> net price (set)	thickness <b>2.0 mm</b> net price (set)
<b>2125</b>	<b>207 PLN</b>	<b>269 PLN</b>	<b>3300</b>	<b>298 PLN</b>	<b>387 PLN</b>
	<b>48 EUR</b>	<b>62 EUR</b>		<b>69 EUR</b>	<b>90 EUR</b>
<b>2250</b>	<b>222 PLN</b>	<b>289 PLN</b>	<b>3500</b>	<b>315 PLN</b>	<b>410 PLN</b>
	<b>51 EUR</b>	<b>66 EUR</b>		<b>73 EUR</b>	<b>95 EUR</b>
<b>2500</b>	<b>242 PLN</b>	<b>315 PLN</b>	<b>4000</b>	<b>356 PLN</b>	<b>463 PLN</b>
	<b>56 EUR</b>	<b>73 EUR</b>		<b>82 EUR</b>	<b>107 EUR</b>
<b>3000</b>	<b>285 PLN</b>	<b>371 PLN</b>	Packaging method: individual components of the set are packed separately		
	<b>66 EUR</b>	<b>86 EUR</b>			





**CELGAR SP. Z O.O.**

UL. WOLICKA 8  
32-830 WOJNICZ

**PRODUCTION PLANT:**

UL. JAGODOWA 3  
32-830 WOJNICZ

**WHOLESALE SALES:**

TEL. +48 510 281 223  
[sprzedaz@celgar.eu](mailto:sprzedaz@celgar.eu)

**TECHNICAL DEPARTMENT:**

TEL. +48 531 984 070  
[techniczny@celgar.eu](mailto:techniczny@celgar.eu)

**VAT ID (NIP):** 87-33-19-05-26

**REGON:** 120878540

**KRS:** 0000326132

**SHARE CAPITAL:** 2 750 000 PLN

[celgar@celgar.eu](mailto:celgar@celgar.eu)

[www.celgar.eu](http://www.celgar.eu)

**REGIONAL REPRESENTATIVES:**

SOUTH +48 510 281 238

EAST +48 531 984 078

WEST +48 510 281 267